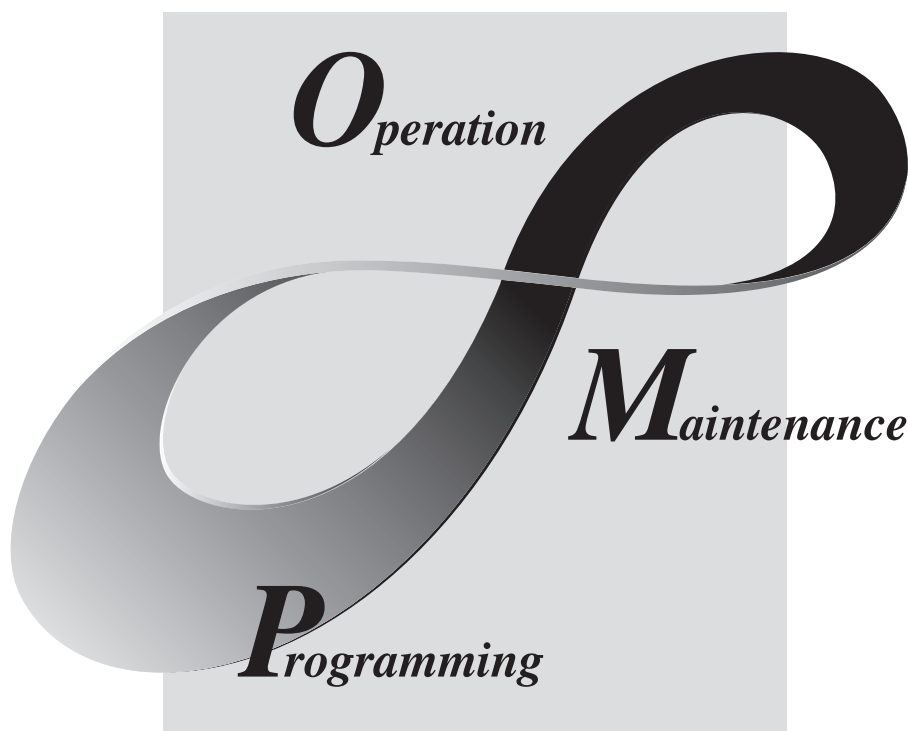


***GX Developer Version 8***

**Operating Manual**

(Startup)

**mitsubishi**



**MELSOFT**  
**Integrated FA Software**

**SW8D5C-GPPW-E**



## REVISIONS

\* The manual number is given on the bottom left of the back cover.

Print Date	* Manual Number	Revision
Feb., 2003	SH(NA)-080372E-A	First edition
Jul., 2003	SH(NA)-080372E-B	Correction Appendix 2
Jun., 2004	SH(NA)-080372E-C	Correction Section 2.2, Chapter 3, Section 3.1.2, Section 4.1
Apr., 2005	SH(NA)-080372E-D	Correction Section 2.2
Jun., 2005	SH(NA)-080372E-E	Correction Section 2.2
Apr., 2007	SH(NA)-080372E-F	Correction Section 2.2
Jan., 2008	SH(NA)-080372E-G	Addition Section 3.4 Correction Abbreviations and Generic Terms in This Manual, Section 2.2, Section 3.1.2, Section 3.2, Section 3.3
Apr., 2008	SH(NA)-080372E-H	Correction Section 3.1.2
Jun., 2008	SH(NA)-080372E-I	Correction Section 2.2, Section 3.2
Dec., 2008	SH(NA)-080372E-J	Correction Section 2.2
Apr., 2009	SH(NA)-080372E-K	Correction SOFTWARE USER REGISTRATION, About Manuals, Product Makeup, Section 3.1.2, Section 3.3

Japanese Manual Version SH-080355-N

This manual confers no industrial property rights or any rights of any other kind, nor does it confer any patent licenses. Mitsubishi Electric Corporation cannot be held responsible for any problems involving industrial property rights which may occur as a result of using the contents noted in this manual.

© 2003 MITSUBISHI ELECTRIC CORPORATION

## INTRODUCTION

Thank you for choosing the Mitsubishi MELSOFT series comprehensive Factory Automation software. Read this manual and make sure you understand the functions and performance of MELSOFT series programmable controller thoroughly in advance to ensure correct use.

## CONTENTS

REVISIONS .....	A- 1
INTRODUCTION .....	A- 2
CONTENTS .....	A- 2
About Manuals .....	A- 3
Abbreviations and Generic Terms in This Manual .....	A- 4
Product Makeup .....	A- 5
<b>1. GENERAL DESCRIPTION</b>	<b>1- 1 to 1- 2</b>
<b>2. SYSTEM CONFIGURATION</b>	<b>2- 1 to 2- 2</b>
2.1 System Configuration .....	2- 1
2.2 Operating Environment .....	2- 1
<b>3. INSTALLATION AND UNINSTALLATION</b>	<b>3- 1 to 3-26</b>
3.1 Installation .....	3- 1
3.1.1 Installing Procedure .....	3- 1
3.1.2 Installing Operation .....	3- 2
3.2 Uninstallation .....	3-12
3.3 Installing the USB Driver .....	3-14
3.4 Updating the USB Driver .....	3-21
<b>4. USING GX Developer</b>	<b>4- 1 to 4- 6</b>
4.1 GX Developer Edit Window and Various Tools .....	4- 1
4.2 Dialog Box Basic Operations .....	4- 4
<b>APPENDICES</b>	<b>Appendix-1 to Appendix-5</b>
APPENDIX 1 Questions and Answers about Personal Computers .....	Appendix- 1
APPENDIX 2 Notes on GX Developer .....	Appendix- 2

## About Manuals

The following lists the manuals for this software package.  
Refer to the following table when ordering manuals.

### Related Manuals

Manual Name	Manual Number (Model Code)
<b>GX Developer Version8 Operating Manual</b> Describes the online functions of GX Developer including the programming procedure, printing out procedure, monitoring procedure, and debugging procedure. (Sold separately.)	SH-080373E (13JU40)
<b>GX Developer Version8 Operating Manual (SFC)</b> Describes the editing and monitoring operations of the SFC functions using GX Developer. (Sold separately.)	SH-080374E (13JU42)
<b>GX Developer Version8 Operating Manual (MELSP-L)</b> Describes the editing and monitoring operations of the MELSP-L format SFC functions using GX Developer. (Sold separately.)	SH-080375E (13JU43)
<b>GX Developer Version8 Operating Manual (Function Block)</b> Describes the editing and monitoring operations of the function blocks using GX Developer. (Sold separately.)	SH-080376E (13JU44)
<b>GX Developer Version 8 Operating Manual (Structured Text)</b> Explains creating structured text (ST) program and printing out using GX Developer. (Sold separately.)	SH-080367E (13JU37)
<b>GX Simulator Version6 Operating Manual</b> Describes the setting and operating methods for monitoring the device memory and simulating the machine side operations using GX Simulator. (Sold separately.)	SH-080169 (13JU17)
<b>GPP Function Software for Windows SW4D5C-GPPW-E SW4D5C-LLT-E</b> <b>Starting GPPW(Guidebook)</b> This manual is intended for beginners of the SW4D5C-GPPW-E, SW4D5C-LLT-E. It describes how to install and start them and provides you with a basic knowledge and the methods for creating and editing circuits, making printouts, monitoring, and debugging showing a few illustrations. (Sold separately.)	IB-0800057 (13J966)
<b>Structured Text (ST) Programming Guide Book</b> Intended for beginners, i.e., those who create structured text program for the first time. Explains basic operations and functions using sample programs. (Sold separately.)	SH-080368E (13JF69)

Note: Manuals except guidebooks are stored on CD-ROM of the corresponding software package in PDF format.

Any of the manuals is available separately in printed form. Please indicate its manual number (model code) in the above list.

## Abbreviations and Generic Terms in This Manual

Unless otherwise specified, the following generic names and abbreviations are used for explanations in this manual.

Generic Name/Abbreviation	Description
GX Developer	Generic product name of the product types SW8D5C-GPPW-E, SW8D5C-GPPW-EA, SW8D5C-GPPW-EV and SW8D5C-GPPW-EVA. -A means a multiple-license product, and -V an updated product.
1-license product	Abbreviation of the 1-license product of GX Developer or GX Simulator.
Multiple-license product	Abbreviation of the multiple-license product of GX Developer or GX Simulator.
Windows Vista®	Generic term of Microsoft® Windows Vista® Home Basic Operating System, Microsoft® Windows Vista® Home Premium Operating System, Microsoft® Windows Vista® Business Operating System, Microsoft® Windows Vista® Ultimate Operating System and Microsoft® Windows Vista® Enterprise Operating System.
Windows® XP	Generic term of Microsoft® Windows® XP Professional Operating System and Microsoft® Windows® XP Home Edition Operating System.

## Product Makeup

GX Developer and GX Simulator are made up of the following products.

Type	Product Name	Quantity
SW8D5C-GPPW-E(V)	GX Developer Version8 (1-license product) (CD-ROM)	1
	Method of installing the MELSOFT Series	1
	End-user software license agreement	1
	Software registration notice	1
	License agreement	1
SW8D5C-GPPW-E(V)A	GX Developer Version8 (Multiple license product) (CD-ROM)	1
	Method of installing the MELSOFT Series	1
	End-user software license agreement	1
	Software registration notice	1
	License agreement	n*1

\*1: The same number of software registration cards as that of licenses are packed with the product.

### NOTICES

- We don't guarantee the commercially-available Microsoft® Windows® Operating System-based software products that have been introduced in this manual.
- We hold the copyrights of this software package.
- No part of this manual may be transcribed or duplicated in any form without prior permission by Mitsubishi Electric Corporation.
- We have attempted to cover all the revisions of software and hardware, but this manual may not contain the latest revisions.
- The software of this product requires one license to be purchased per computer.
- We permit the user to use this software package (including this manual) based on the Software License Agreement.
- We are not liable for consequences or influences due to this software package (including this manual).
- The specifications of this software package and the descriptions in this manual may be altered in future without prior notice.

# MEMO

[illegible]



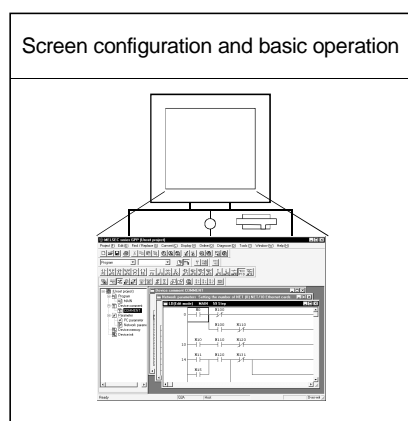
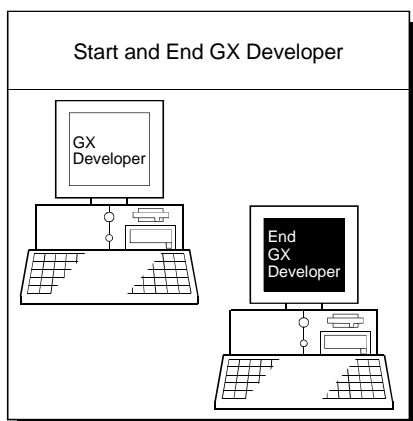
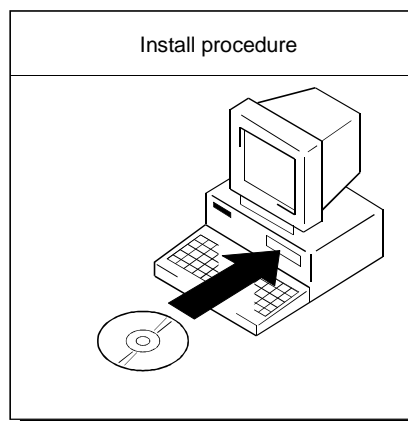
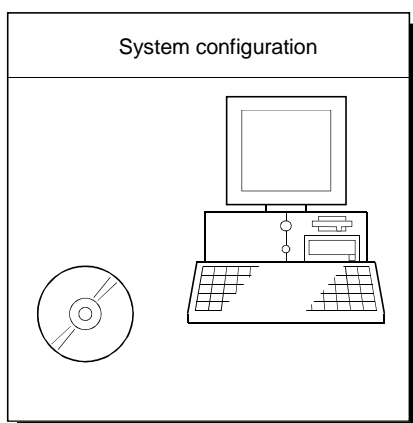
## 1. GENERAL DESCRIPTION

1

This manual describes the system configuration, installation procedure, start method, screen configuration, and basic operations of the following Microsoft® Windows® Operating System compatible products.

- GX Developer (CD-ROM Version)

The product type ended by "-V" is an update-only product.



# MEMO

1

[illegible]

## 2. SYSTEM CONFIGURATION

### 2.1 System Configuration

GX Developer is available to install into the PC that meets the operating environment specification in Section 2.2.

### 2.2 Operating Environment

The following table summarizes the operating environment.

Item		Contents
Peripheral device	Personal computer	Personal computer in which Windows® operates.
	PC CPU module	MELSEC-Q Series-compatible PC CPU module (CONTEC CO., Ltd.)
Personal computer main body	CPU	See "Applicable operating system and the corresponding required PC performance" shown below.
	Required memory	
Available hard disk space		200MB or more *1
Disk drive		CD-ROM drive (if using CD-ROM media)
Monitor		Resolution 800x600 pixels or higher *2 However, set the resolution to 1024x768 pixels or higher when using the CC IE Control diagnostics function.
Communication interface		RS-232 port : Needed when communicating with the programmable controller CPU. (Required when accessing a programmable controller CPU (Basic model QCPU, QCPU (A mode), ACPU, QnACPU, and FXCPU))
		USB port : Can be used when communicating with the QCPU (Q mode), QSCPU, FXCPU(FX3G). (Excludes the Basic model QCPU, Q02CPU and remote I/O modules.)
Operating system		Microsoft® Windows® 95 Operating System *3 Microsoft® Windows® 98 Operating System Microsoft® Windows® Millennium Edition Operating System Microsoft® WindowsNT® Workstation Operating System Version 4.0 Microsoft® Windows® 2000 Professional Operating System Microsoft® Windows® XP Professional Operating System Microsoft® Windows® XP Home Edition Operating System Microsoft® Windows Vista® Home Basic Operating System Microsoft® Windows Vista® Home Premium Operating System Microsoft® Windows Vista® Business Operating System Microsoft® Windows Vista® Ultimate Operating System Microsoft® Windows Vista® Enterprise Operating System

\*1: At minimum, free space of 15GB is required for Windows Vista®.

\*2: Resolution 1024 × 768 pixels or higher is recommended for Windows Vista®.

\*3: Windows® 95 does not support the structured text language function.

Applicable operating system and the corresponding required PC performance.

Item	Required PC performance	
	CPU	Required memory
Windows® 95 (Service Pack 1 or higher)	Pentium® 133MHz or higher *4	32MB or more *5
Windows® 98	Pentium® 133MHz or higher *4	32MB or more *5
Windows® Millennium Edition	Pentium® 150MHz or higher *4	32MB or more *5
WindowsNT® Workstation 4.0 (Service Pack 3 or higher)	Pentium® 133MHz or higher *4	32MB or more *5
Windows® 2000 Professional	Pentium® 133MHz or higher *4	64MB or more *5
Windows® XP Professional	Pentium® 300MHz or higher *4	128MB or more *5
Windows® XP Home Edition	Pentium® 300MHz or higher *4	128MB or more *5
Windows Vista® Home Basic	Pentium® 1GHz or higher	1GB or more
Windows Vista® Home Premium	Pentium® 1GHz or higher	1GB or more
Windows Vista® Business	Pentium® 1GHz or higher	1GB or more
Windows Vista® Ultimate	Pentium® 1GHz or higher	1GB or more
Windows Vista® Enterprise	Pentium® 1GHz or higher	1GB or more

\*4: Pentium® 300MHz or higher is recommended when creating label programs.

\*5: 64MB or more is recommended when creating label programs.

#### POINT

- Instruction for use of the online manual  
Addition of memory ensures more comfortable use.
- Instruction for use of the PDF data  
Use with addition of personal computer memory ensures comfortable operation.
- Depending on the operating environment of the personal computer, editing on multiple screens opened for programming or like may cause a memory shortage error.  
When the personal computer is used with only GX Developer booted, the number of edit screens should be up to 40 as a guideline.
- When Microsoft® Windows® XP or Windows Vista® is used, the following new functions cannot be used.  
If any of the following new functions is used, this product may not operate normally.
  - Start of application in Windows® compatible mode
  - Fast user switching
  - Remote desktop
  - Big fonts (Details setting of Screen properties)
 Additionally, 64-bit Windows® XP and Windows Vista® are not available.
- In Windows Vista®, log in as a user having User authority or higher.

### 3. INSTALLATION AND UNINSTALLATION

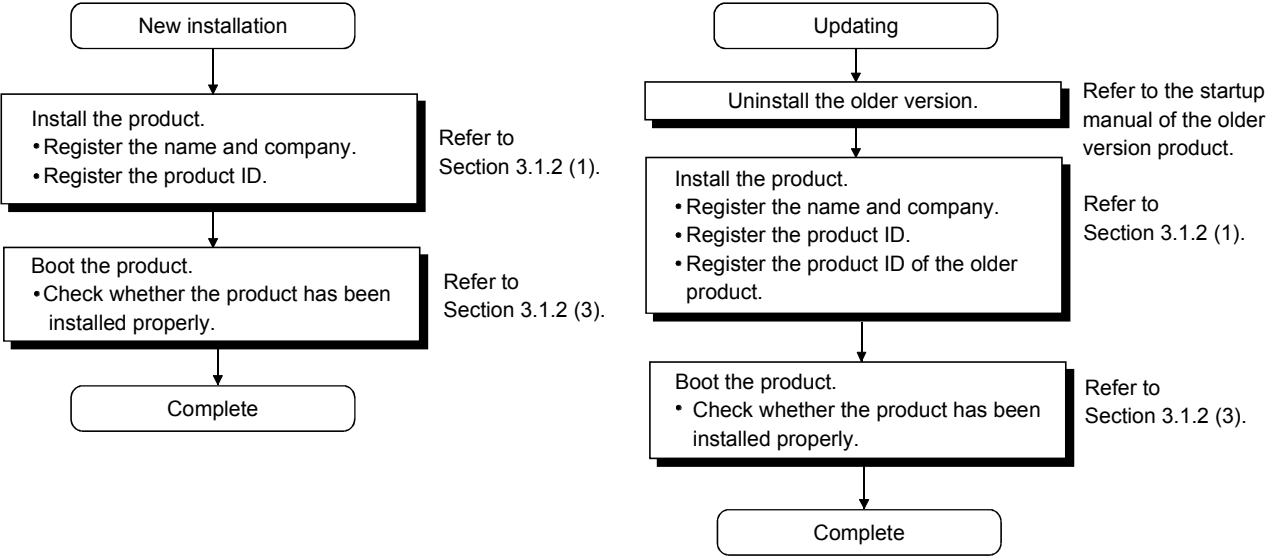
This chapter explains how to install and uninstall the product.

#### 3.1 Installation

##### 3.1.1 Installing Procedure

Install GX Developer in the following procedure.

3



<b>POINT</b>
If the DLL overwrite confirmation message appears during installation, choose "Yes" to overwrite the DLLs. If they are not overwritten, the product may not be run properly.

### 3.1.2 Installing Operation

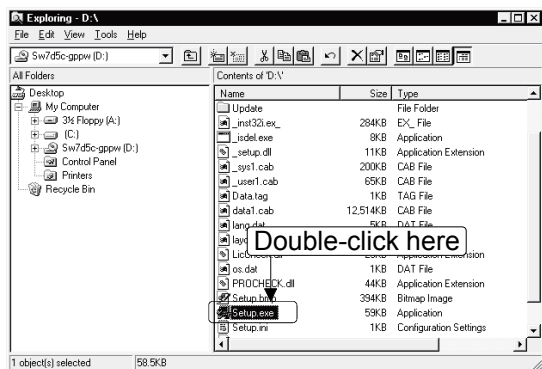
Before starting installation, confirm the following.

#### POINT

- Terminate all the other applications running under Microsoft® Windows® Operating System before installation.
- The installer may not work normally because the update program of operating system or other companies' software such as Windows Update and java update may start automatically. Please install the driver after changing the setting of the update program not to start automatically.
- When using Windows NT® Workstation Operating System Version 4.0, Microsoft® Windows® 2000 Professional Operating System, Windows® XP Professional Operating System, Windows® XP Home Edition Operating System, Windows Vista® Home Basic Operating System, Windows Vista® Home Premium Operating System, Windows Vista® Business Operating System, Windows Vista® Ultimate Operating System, Windows Vista® Enterprise Operating System, logon as a user who has the attributes of an Administrator (for computer management).
- If the license key FD is valid, installing this product enables updating.  
(The license volume of the older version decreases by 1 license.)

#### (1) Installing the product

(The screens of Windows® 98 are used in the explanation.)

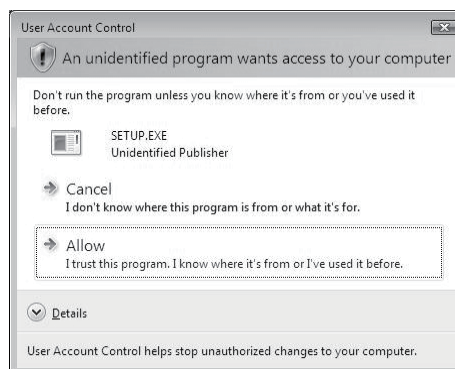


1) Start Windows® Explorer and click the drive in which the disk has been inserted.

Double-click "Setup.exe".

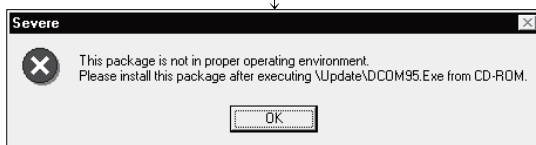
On Windows® Explorer, choose [Start]-[Programs]-[Windows Explorer].

\*: When user account control is enabled in Windows Vista®, the following screen appears.  
Click "Allow".

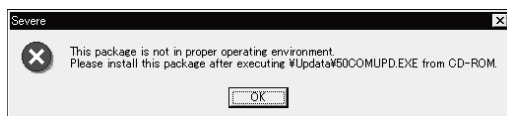
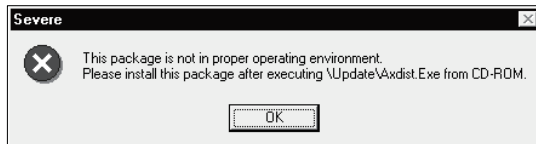


(To the next page)

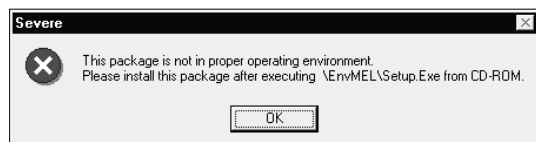
(From the previous page)



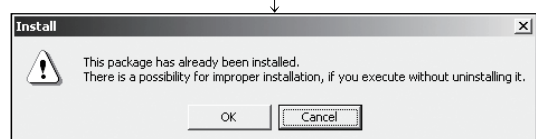
- 2) If either of the left screens appears, perform operation in accordance with the instructions given in (a) in "(2) When message appears at start of installation".  
After the operation is over, restart installation operation.



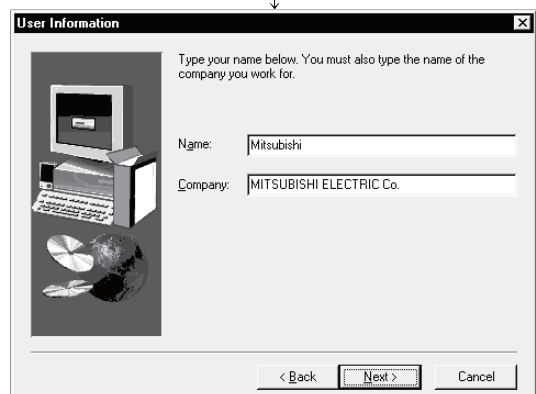
- If the left screen appears, perform operation in accordance with the instructions given in (b) in "(2) When message appears a start of installation".  
After the operation is over, restart installation operation.



- If the left screen appears, perform operation in accordance with the instructions given in (b) in "(2) When message appears at start of installation".  
After the operation is over, restart installation operation.



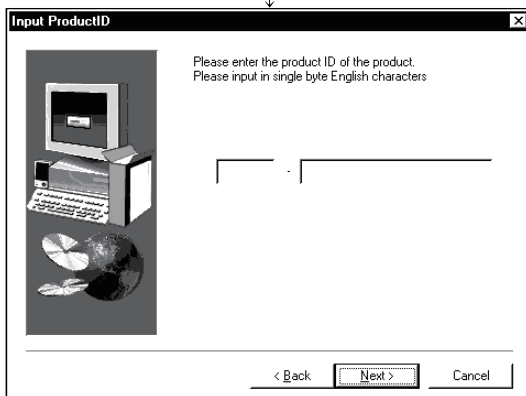
- 3) If the left screen appears, click **OK** button to uninstall the product once and then reinstall the product.



- 4) Type the name and company, and click **Next>** button.  
As the confirmation dialog box appears, perform operation in accordance with the message.

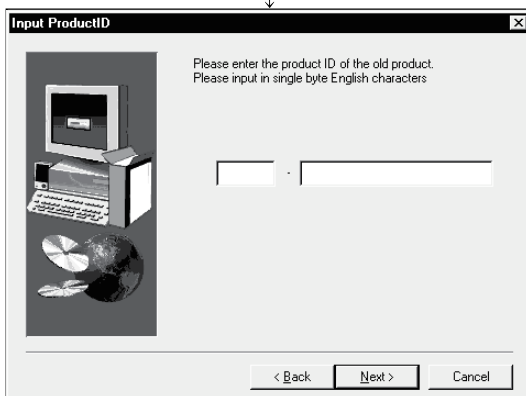
(To the next page)

(From the previous page)



- 5) Type the product ID and click **Next>** button.

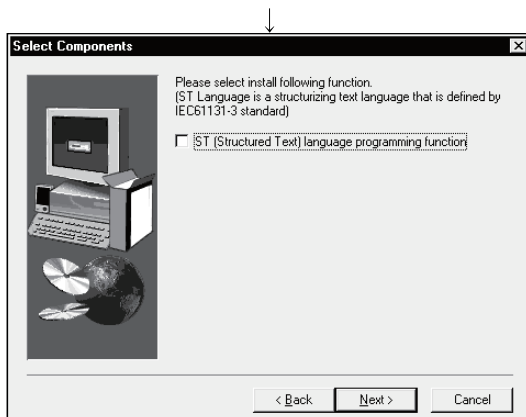
The product ID is described in "License agreement" included with the product.



- 6) When the product is to be updated, the screen shown on the left appears. Type the product ID of the older product and click **Next>** button.

The product ID is shown in the "Software Registration Card" or "License agreement" supplied with the older product.

When newly installing the product, the left screen does not appear.



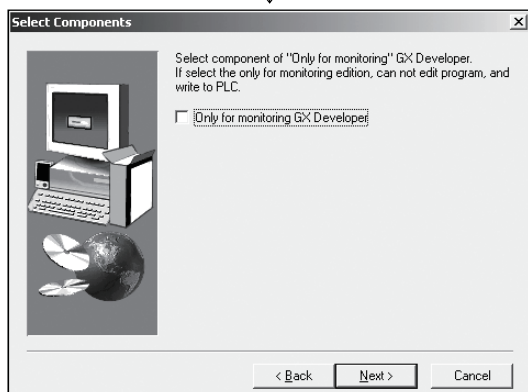
- 7) When using structured text (ST) language, check the corresponding check box, and click **Next>** button.

When structured text (ST) language is not required, just click **Next>** button.

(To the next page)



(From the previous page)

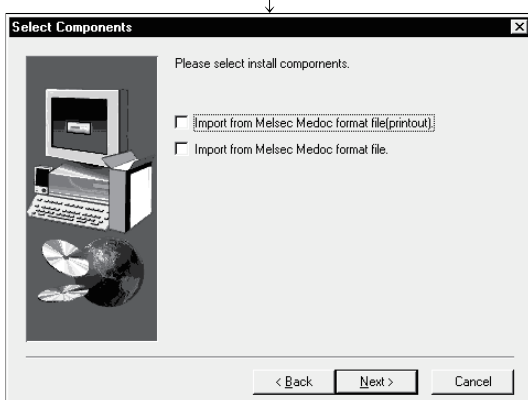


8) When using all functions, click **Next>** button.

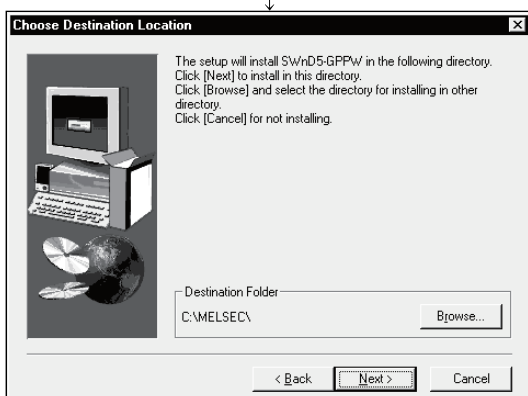
When installing monitoring-only GX Developer, turn on the check box and click **Next>** button.

Installing the product as monitoring-only GX Developer prevents on-the-spot editing, accidental changes, and so on. (This disables such functions as write to PLC and PLC data deletion.)

Refer to the GX Developer Operating Manual for the functions available for monitoring-only GX Developer.



9) When you want to import to GX Developer the data created with MELSEC MEDOC or the data output as a printout data file, check the check box and click **Next>** button.



10) Specify the installation Destination Folder.

If the installation Destination Folder displayed is correct, click **Next>** button.

If you change the destination folder, click **Browse** button and specify a new drive and folder.

※: The following screen appears in Windows Vista® .  
Click "Install this driver software anyway".  
This screen may appear in several times.



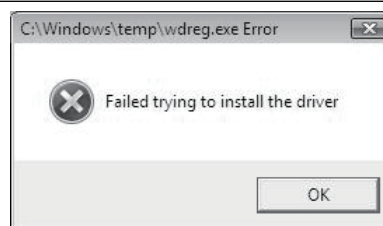
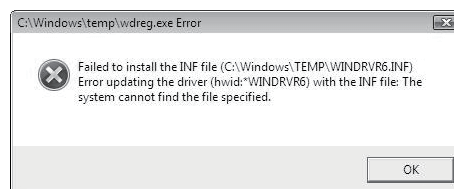
(To the next page)

(From the previous page)



The either of the following screens may appear behind the Windows Security screen. Then, press the **[Alt] + [Tab]** keys to bring it to the front.

Click **[OK]** button on the following screens.

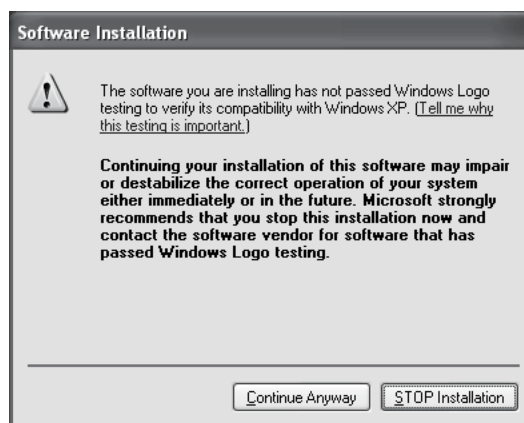


※: For Windows® XP, the following screen appears at first installation.

Click **[Continue]** button.

We checked operations in Windows® XP (Problems never occur after installation.)

The following screen may appear behind another screen. Then, press the **[Alt] + [Tab]** keys to bring it to the front.

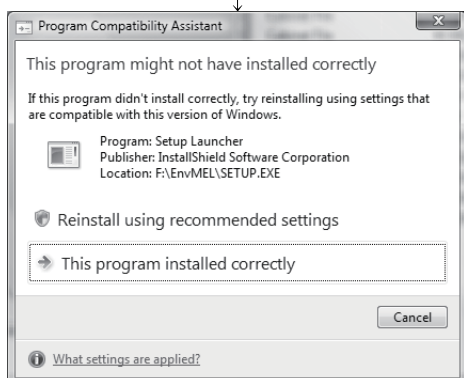


(To the next page)

11) This completes installation.

Click **[OK]** button.

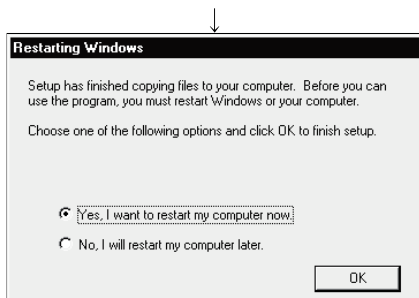
(From the previous page)



12) When the left screen appears on Windows Vista®, regardless of the installation result, choose "This program installed correctly".

Do not choose "Reinstall using recommended settings", because the installer installs an incorrect module.

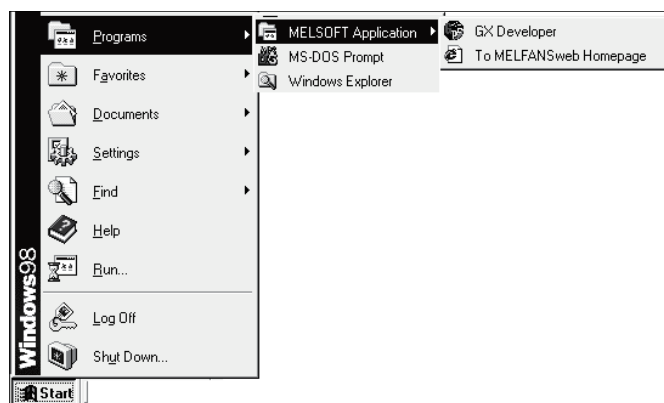
If choose, reinstall GX Developer with following POINT on the next page.



13) Windows® must be rebooted if the screen shown on the left appears.

(Completion)

Installation of the product registers the icon as shown below.



#### REMARK

When Windows® XP Professional or Windows Vista® is used, the icons are registered to [Start] - [All Programs] - [MELSOFT Application].

**POINT**

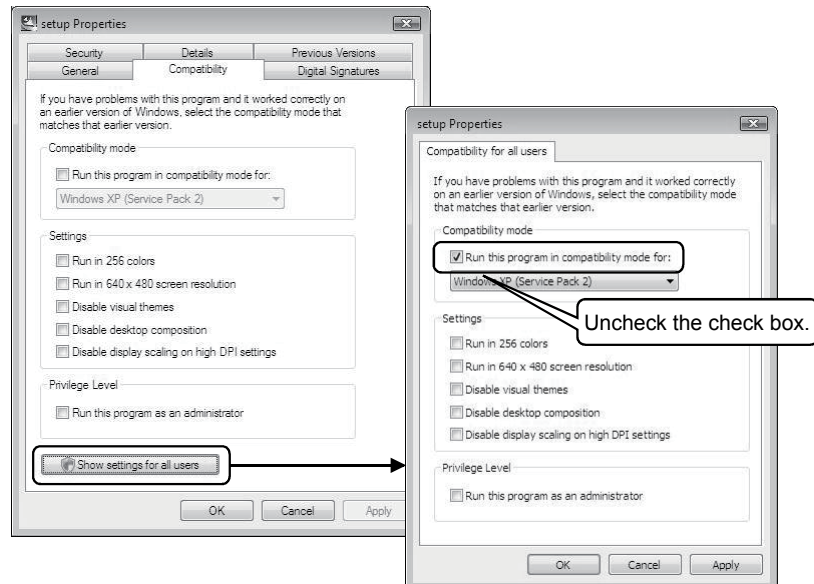
Note the following instructions when the installer is started from the hard disk drive of the personal computer for which Windows Vista® has been installed.

If the "Program Compatibility Assistant" screen appears after the installation, choose "This program installed correctly".

If "Reinstall using recommended settings" is selected by mistake, 'Windows XP SP2 compatibility mode' is set automatically.

Disable the 'Windows XP SP2 compatibility mode' by following the procedure described below, and perform the reinstallation.

1. Right-click on the setup.exe icon of the installation target in the Windows explorer, and open the "setup Properties" screen.
2. Select the "Compatibility" tab and click the "Show settings for all users" button.
3. Uncheck the "Run this program in compatibility mode for:" check box of compatibility mode in the "Compatibility for all users" tab and click the **OK** button .
4. Click the **OK** button on the "setup Properties" screen.



## (2) When message appears at start of installation

When the installation of this product starts, the "This package is not in proper operating environment" message appears, disabling normal completion of installation.

In such a case, close all applications and perform the (a) to (c) operation.

## (a) Installation of dcom95.exe or Axdist.exe

Execute "/Update/dcom95.exe" or "/Update/Jaaxdist.exe" within the product (CD-ROM).

Then, restart the personal computer and install the product.

The exe file to be executed on the corresponding operating system is indicated below.

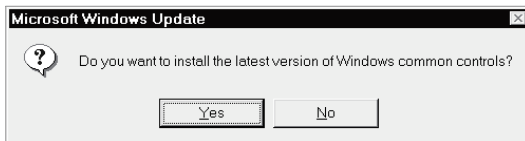
OS	File name
Microsoft® Windows® 95 Operating System	dcom95.exe
Microsoft® Windows® 98 Operating System	Axdist.exe
Microsoft® Windows NT® Workstation Operating System Version 4.0	Axdist.exe

(dcom95.exe and Axdist.exe are in the "Update" folder on CD-ROM.)

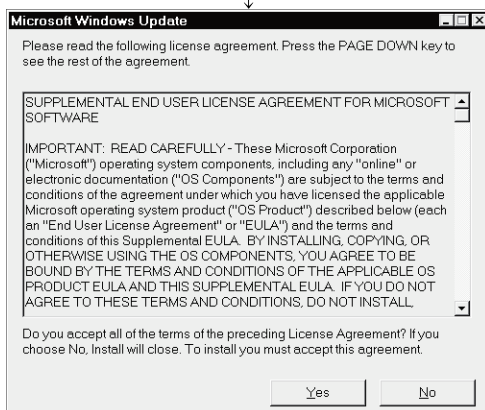
## (b) Installation of 50comupd.exe

Execute "/Update/50comupd.exe" within the product (CD-ROM).

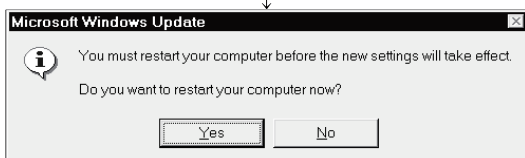
Then, restart the personal computer and install the product.



1) Click the **Yes** button to start updating Windows.



2) Accept the agreement on the left screen and click the **Yes** button.



3) Click **Yes** button to restart.  
After a restart, install the product.

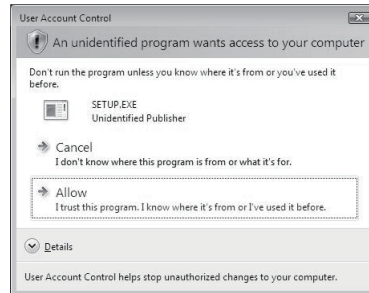
## (c) Installation of EnvMEL

Execute "/EnvMEL/Setup.exe" within the product (CD-ROM).

Then, install the product.

\* : When user account control is enabled in Windows Vista®, the following screen appears.

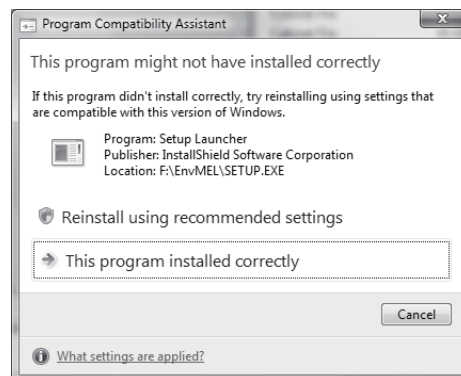
Click "Allow".



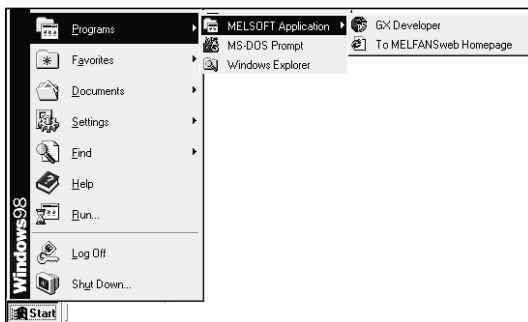
\* : After executing the above exe file, reinstall the product. If this product is not installed properly at this time, reboot the personal computer.

When the following screen appears on Windows Vista®, regardless of the installation result, choose "This program installed correctly".

Do not choose "Reinstall using recommended settings", because the installer installs an incorrect module.



## (3) Confirming that the product has booted

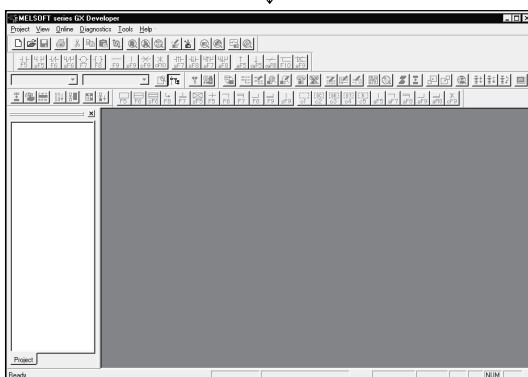


- 1) Click [Start] and move the cursor to the [Programs]-[MELSOFT Application] menu.

\*: [All Programs] appears when using Windows® XP Professional or Windows Vista®.



- 2) Click the [GX Developer] menu.

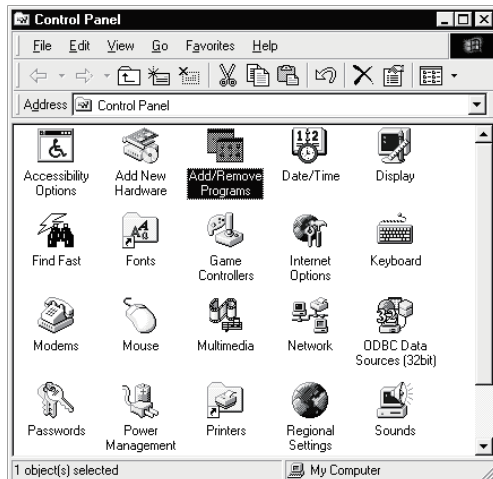


- 3) The product boots.  
If displayed, the screen shown on the left indicates normal installation.

## 3.2 Uninstallation

This section describes the operation for removing the product from the hard disk.

### Uninstallation of the product



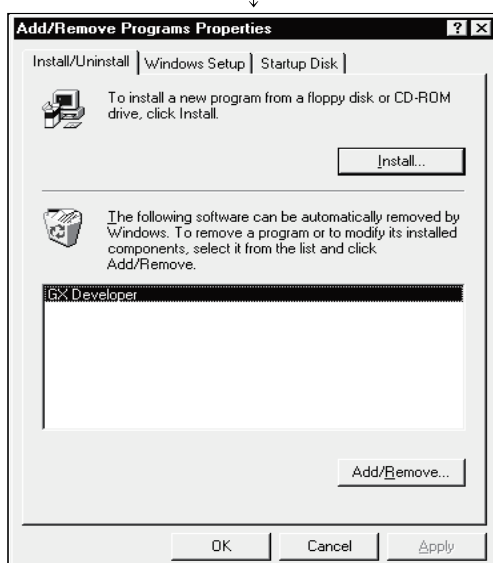
- 1) From the Control Panel, choose and double-click "Add/Remove Programs".  
To display the Control Panel, choose [Start]-[Settings]-[Control Panel].

#### REMARKS

When using Windows® XP, choose "Add or Remove Programs" from the Control Panel.

Choose "Uninstall a program" on the Control Panel in Windows Vista®.

To display the Control Panel, choose [Start] - [Control Panel].



- 2) Select the software package to be deleted/modified.  
Choose "GX Developer".  
After selection, click **Add/Remove...** button.

The screen shown on the left is the one for Windows® 98.  
The screen displayed varies with the OS.

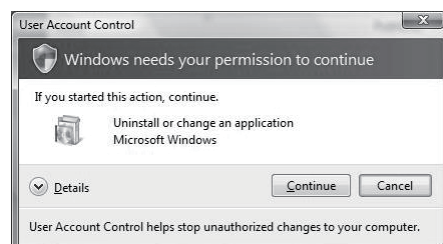
#### REMARKS

The screen shown on the left is that of Windows® 98.  
The displayed screen varies with the OS.

When using Windows® 2000 Professional, Windows® XP, perform the following operation.

- (a) Click "Change/Remove Programs".
- (b) Click "GX Developer".
- (c) Click **Change/Remove** button.

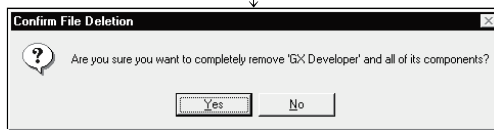
\*:When user account control is enabled in Windows Vista®, the following screen appears.  
Click the **Continue** button.



(To the next page)



(From the previous page)



- 3) Check whether you will remove the software package or not.

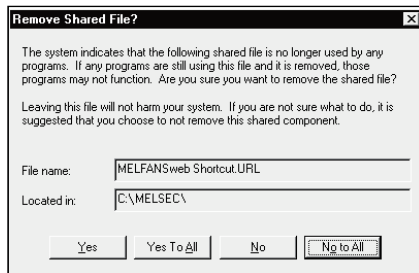
When uninstalling it, click **Yes** button.

Uninstallation starts.

When not uninstalling it, click **No** button.

This returns to the preceding screen.

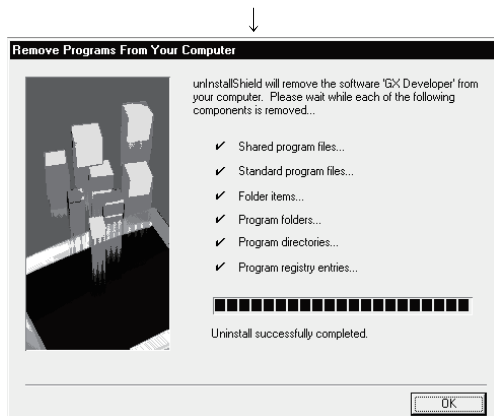
\*: Components indicate the icons and files installed.



- 4) If the left screen has appeared, click the **No To All** button.

Clicking the **Yes** or **Yes To All** button deletes all shared files of Windows® compatible MELSOFT software.

Therefore, when deleting the product only, click **No To All** button.



- 5) Click **OK** button when the message indicating the end of removal has appeared.

When the message indicating completion has appeared, uninstallation is complete.

(Completion)

### 3.3 Installing the USB Driver

When Windows® 2000 Professional, Windows® XP and Windows Vista® used, the USB driver must be installed to make CPU USB communication.

The following is the USB driver installation procedure.



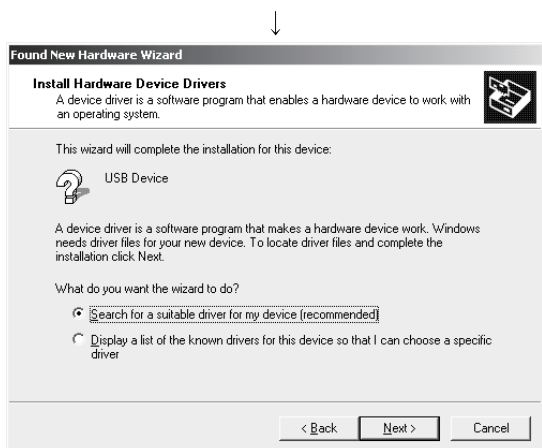
- If the USB driver cannot be installed, check the following setting.
    - (1) When Windows® 2000 Professional is used  
If you have selected "Block-Prevent installation of unsigned files" after [Control Panel] - [System] - [Hardware] - [Driver Signing], the USB driver may not be installed.  
Choose "Ignore-Install all files, regardless of file signature" or "Warn-Display a message before installing an unsigned file" for [Driver Signing], and install the USB driver.
    - (2) When Windows® XP used  
If you have selected "Block-Never install unsigned driver software" after [Control Panel] - [System] - [Hardware] - [Driver Signing], the USB driver may not be installed.  
Choose "Ignore-Install the software anyway and don't ask for my approval" or "Warn-Prompt me each time to choose an action" for [Driver Signing], and install the USB driver.
  - When the FXCPU is used  
Since a USB driver depends on a connected device, install the driver according to the connected device.
    - (1) When connecting to the built-in USB port of the FX3G  
Install the USB driver stored to the installation location of GX Developer, "Easysocket\USBDrivers".
    - (2) When connecting to the USB port of the FX-USB-AW or FX3U-USB-BD  
Install the USB driver\*1 on the CD-ROM included with the FX-USB-AW or FX3U-USB-BD.  
For how to install the driver, refer to the following manual.
      - FX-USB-AW/FX3U-USB-BD User's Manual – USB Driver Installation Edition
- \*1 GX Developer Version 8.72A or later stores a USB driver for the FX-USB-AW and FX3U-USB-BD to its installation location, "Easysocket\FXOptionDrivers".

**[1] When Windows® 2000 Professional is used**

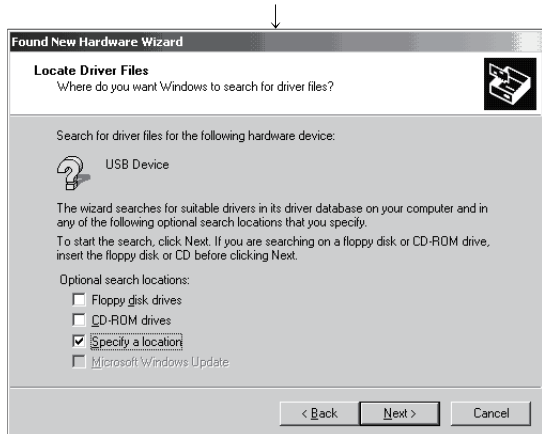
The following indicates the procedure for installing the USB driver when using Windows® 2000 Professional.



- 1) Connecting the QCPU (Q mode) or built-in USB port of the FX3G to personal computer with USB cable displays the screen shown on the left. Click the **Next>** button.



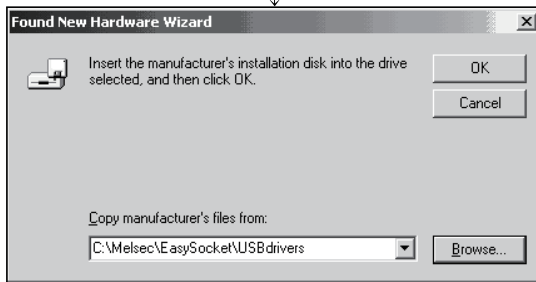
- 2) Choose "Search for a suitable driver for my device (recommended)" and click the **Next>** button.



- 3) Check "Specify a location" and click the **Next>** button.

(To the next page)

(From the previous page)



- 4) As the left screen appears, set the product installation destination "Easysocket\USBDrivers" and click the **Next>** button.

The screen shown on the left shows the example of setting C:\MELSEC\Easysocket\USBdrivers.

If volume MELSOFT products have been installed, browse the installation destination of the first product.



- 5) The screen on the left appears to indicate completion of installation.

Click the **Finish** button to terminate installation.

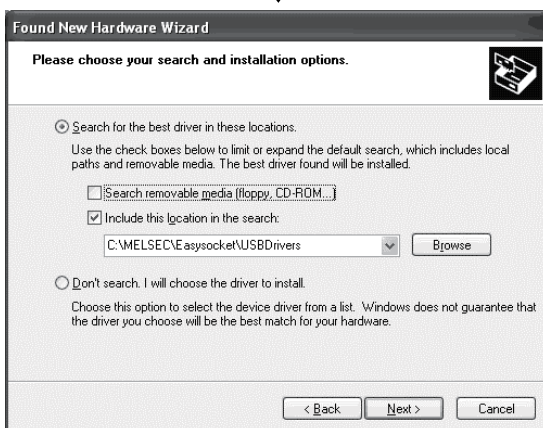
(Completion)

## [2] When Windows® XP used

The following indicates the procedure for installing the USB driver when using Windows® XP.



- 1) Connecting the QCPU (Q mode) or built-in USB port of the FX3G to personal computer with USB cable displays the screen shown on the left. Choose "Install from a list or specific location [Advanced]" and click the **Next>** button.



- 2) As the screen on the left appears, choose "Include this location in the search". Check "Include this location in the search" and set "Easysocket\USBDrivers" of the folder where GX Developer was installed. After setting, click the **Next>** button. The screen shown on the left shows the example of setting C: \MELSEC\Easysocket\USBDrivers. If volume MELSOFT products have been installed, browse the installation destination of the first product.



- 3) As the screen on the left appears, click the **Continue Anyway** button.

**REMARKS**

Though the screen on the left appears during installation of the USB driver, we have confirmed that the USB driver operates properly using Windows® XP. (No problem will occur after installation of the USB driver.) Click **Continue Anyway** button to continue the installation of the USB driver.

(To the next page)

(From the previous page)



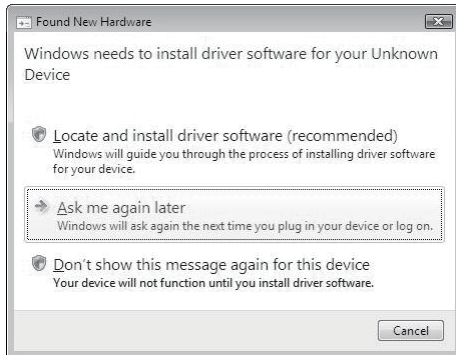
(Completion)

4) The screen on the left appears to indicate completion of installation.

Click the **Finish** button to terminate installation.

## [3] When Windows Vista® used

The following shows installation procedure of USB driver when using Windows Vista®.

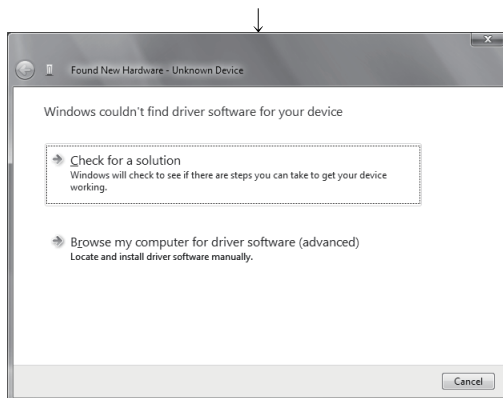
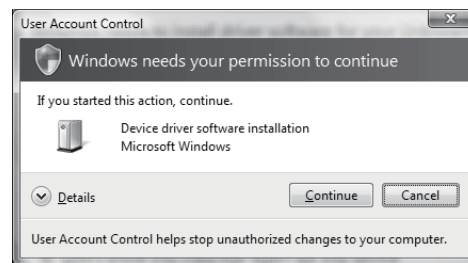


1) Connecting the QCPU (Q mode) or built-in USB port of the FX3G to personal computer with USB cable displays the screen shown on the left.

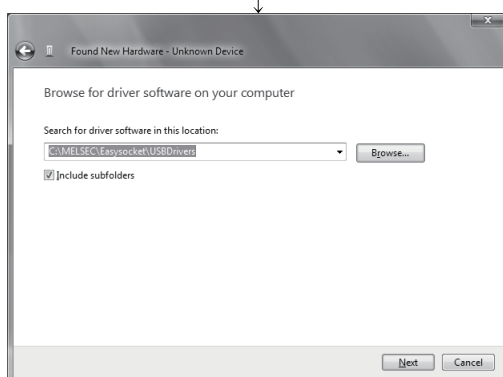
Choose "Locate and install driver software (recommended)" and wait until searching ends.

※: When user account control is enabled, the following screen appears.

Click the **Continue** button.



2) The left screen appears. Choose "Browse my computer for driver software (advanced)".



3) The left screen appears. Set installation location of GX Developer, "Easysocket\USBdrivers".

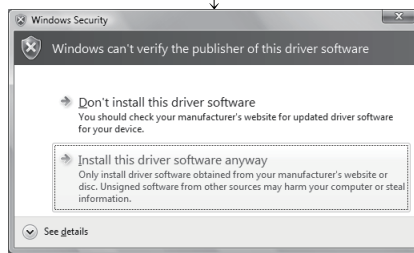
Then, click the **Next>** button.

The left screen shows an example when C:\MELSEC\Easysocket\USBdrivers is set.

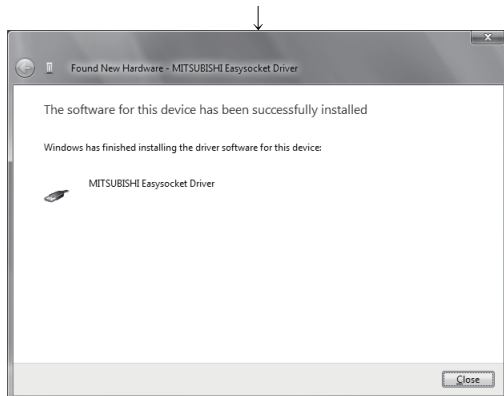
If multiple MELSOFT products have been installed, refer to the installation location of the first installed product.

(To the next page)

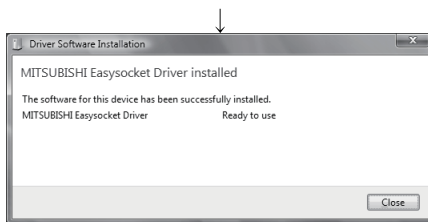
(From the previous page)



4) The left screen appears. Select "Install this driver software anyway".



5) The left screen appears. Click the **Close** button.



6) The left screen appears when the installation ends. Click the **Close** button to exit.

(Completion)



### 3.4 Updating the USB Driver

In Windows Vista®, if installing MELSOFT that is incompatible with Windows Vista® before installing Windows Vista® -compatible MELSOFT, updating the USB driver is required.

Update the USB driver after installing Windows Vista® -compatible MELSOFT.

The USB driver has the following two types:

- USB driver for programmable controller connection
- USB driver for GOT connection (used for the GOT transparent mode.)

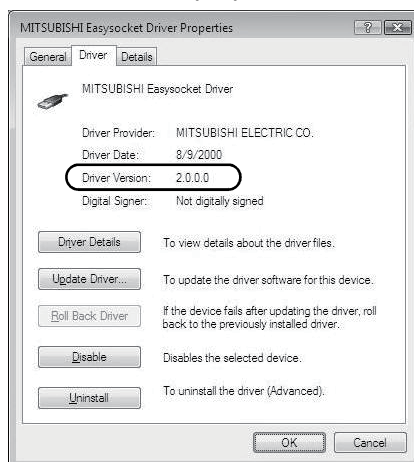
#### (1) Procedure for updating the USB driver for programmable controller connection

##### (a) Checking method

Whether an update of the USB driver is required or not can be checked by its version.

Start the Windows Device Manager while the personal computer is connected to the programmable controller with USB, right-click "MITSUBISHI Easysocket Driver", and select [Properties].

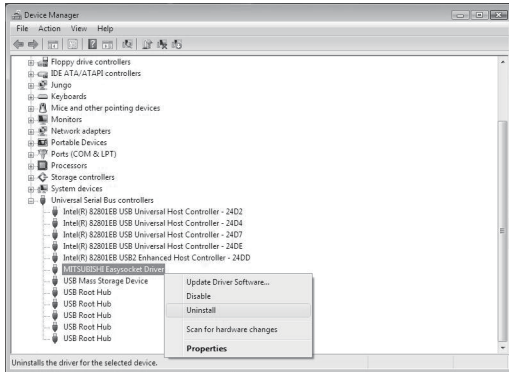
Update is necessary when the "Driver Version" is "2.0.0.0" or earlier in the "Driver" tab of the properties screen.



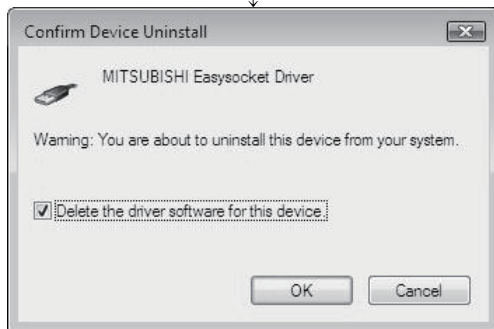
## (b) Procedure for update

- 1) Connect the programmable controller to the personal computer with USB cable.

- 2) Start the Windows Device Manager, right-click "MITSUBISHI Easysocket Driver" as shown left, and select [Uninstall].

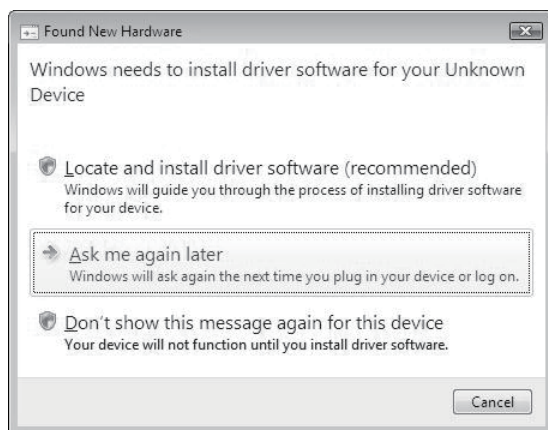


- 3) The warning dialog box as shown on the left appears. Check the "Delete the driver software for this device" check box, and select [OK].



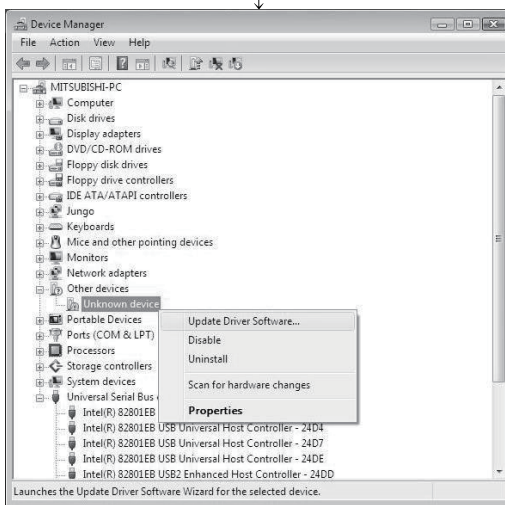
- 4) Disconnect the USB cable and reconnect it to the same USB port after 5 seconds.

- 5) The left Windows confirmation dialog box appears. Select "Ask me again later".



(To the next page)

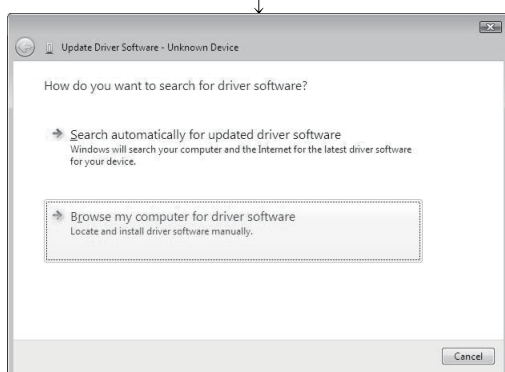
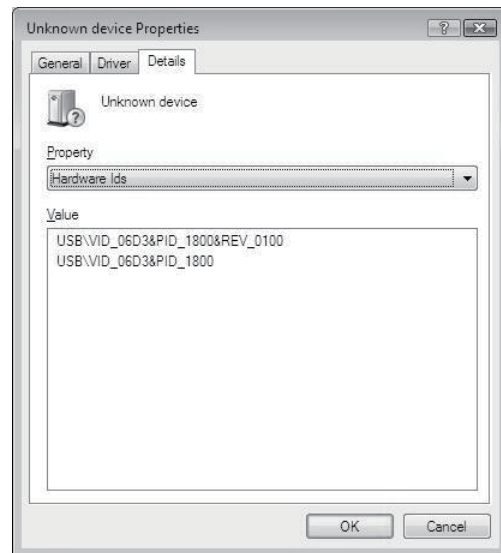
(From the previous page)



- 6) Right-click "Unknown device" in the Windows Device Manager as shown left, and select [Update Driver Software...].

#### REMARKS

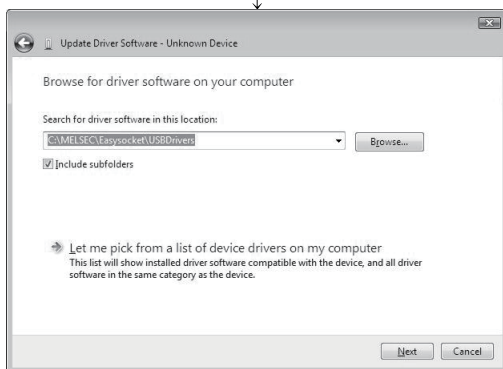
If multiple 'unknown devices' exist therefore cannot be specified, right-click "Unknown device" as shown left and select [Properties]. The "Unknown device", whose "Hardware Ids" is "USB\VID\_06D3&PID\_1800" on the "Details" tab of the properties screen, is the update target.



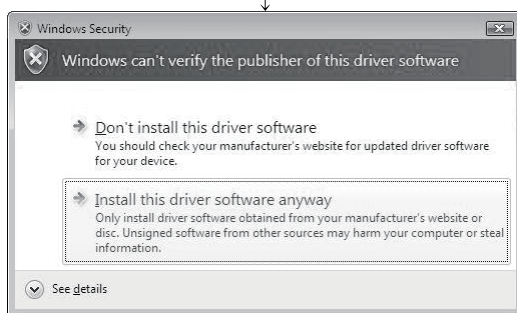
- 6) The left Windows confirmation dialog box appears. Select "Browse my computer for driver software".

(To the next page)

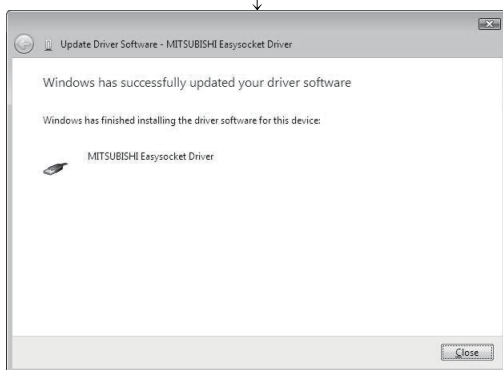
(From the previous page)



- 8) The following Windows confirmation dialog box appears. Set the installed location "Easysocket\USBDrivers" and select [Next]. The screen shown on the left is an example when setting C:\MELSEC\Easysocket\USBDrivers. When multiple MELSOFT products have been installed, refer to the installed location of the first installed product.



- 9) The left Windows confirmation dialog box appears. Select "Install this driver software anyway".



- 10) The left Windows confirmation dialog box appears. Select [Close]. The update is complete.

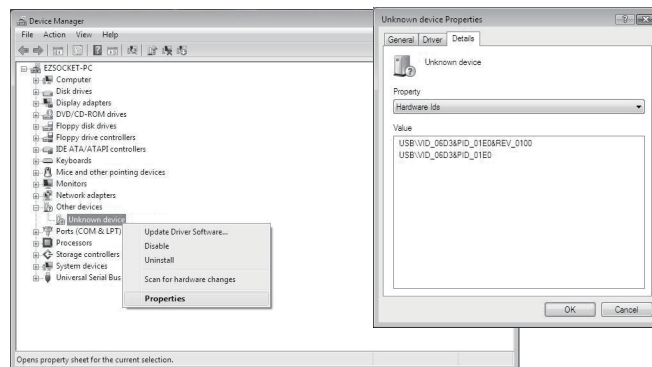
(Completion)

## (2) Procedure for updating the USB driver for GOT connection

### (a) Checking method

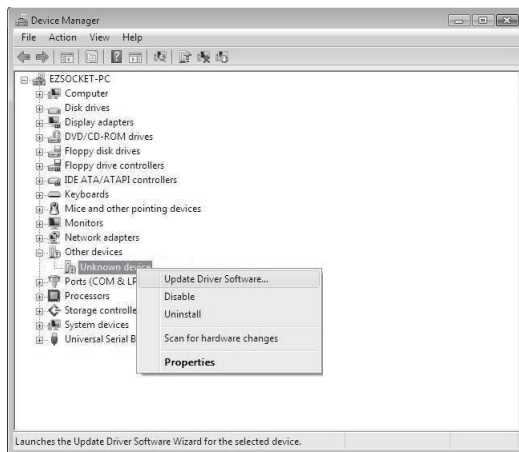
Reset the power on the GOT and start the Windows Device Manager while the personal computer is connected to the GOT with USB. If "MITSUBISHI GOT1000 USB Controller" is not displayed under "Universal Serial Bus controllers", but "Unknown device" is displayed under "Other devices", the device needs to be updated.

The "Unknown device", whose "Hardware Ids" is "USB\VID\_06D3&PID\_01E0" on the "Details" tab of the properties screen, is the update target.



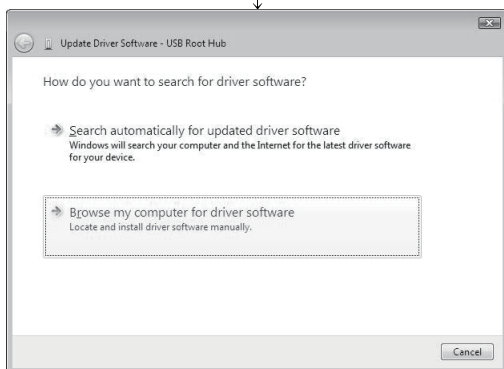
### (b) Procedure for update

- 1) Connect the GOT to the personal computer with USB cable.
- 2) Start the Windows Device Manager, right-click "Unknown device" as shown left, and select [Update Driver Software...].

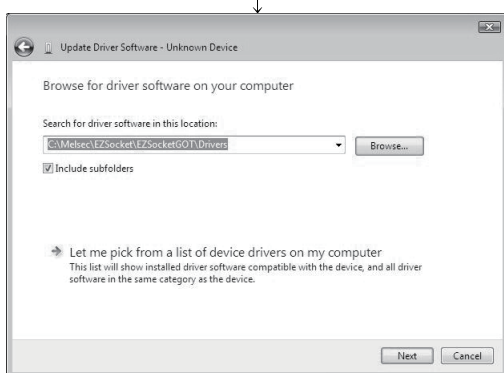


↓  
(To the next page)

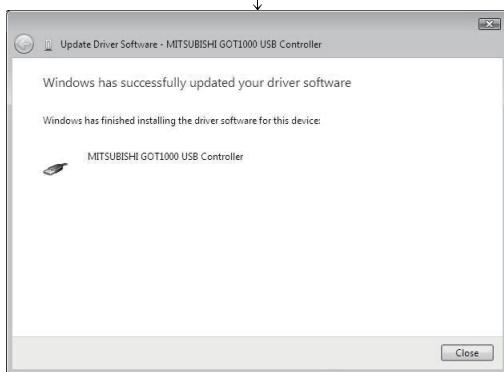
(From the previous page)



- 3) The left screen appears. Select "Browse my computer for driver software".



- 4) The left screen appears. Set the installed location "EZSocket\EZSocketGOT\Drivers" and select [Next]. The screen shown on the left is an example when setting C:\MELSEC\EZSocket\EZSocketGOT\Drivers. When multiple MELSOFT products have been installed, refer to the installed location of the first installed product.



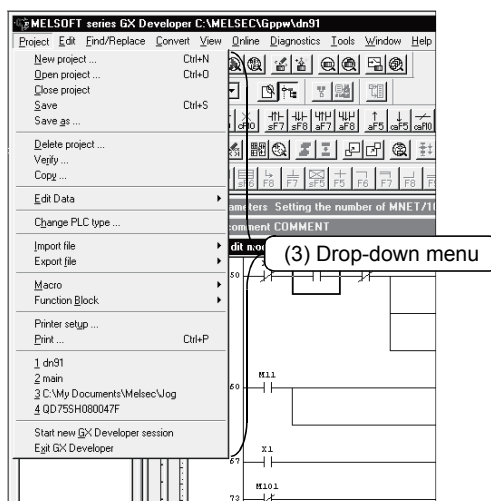
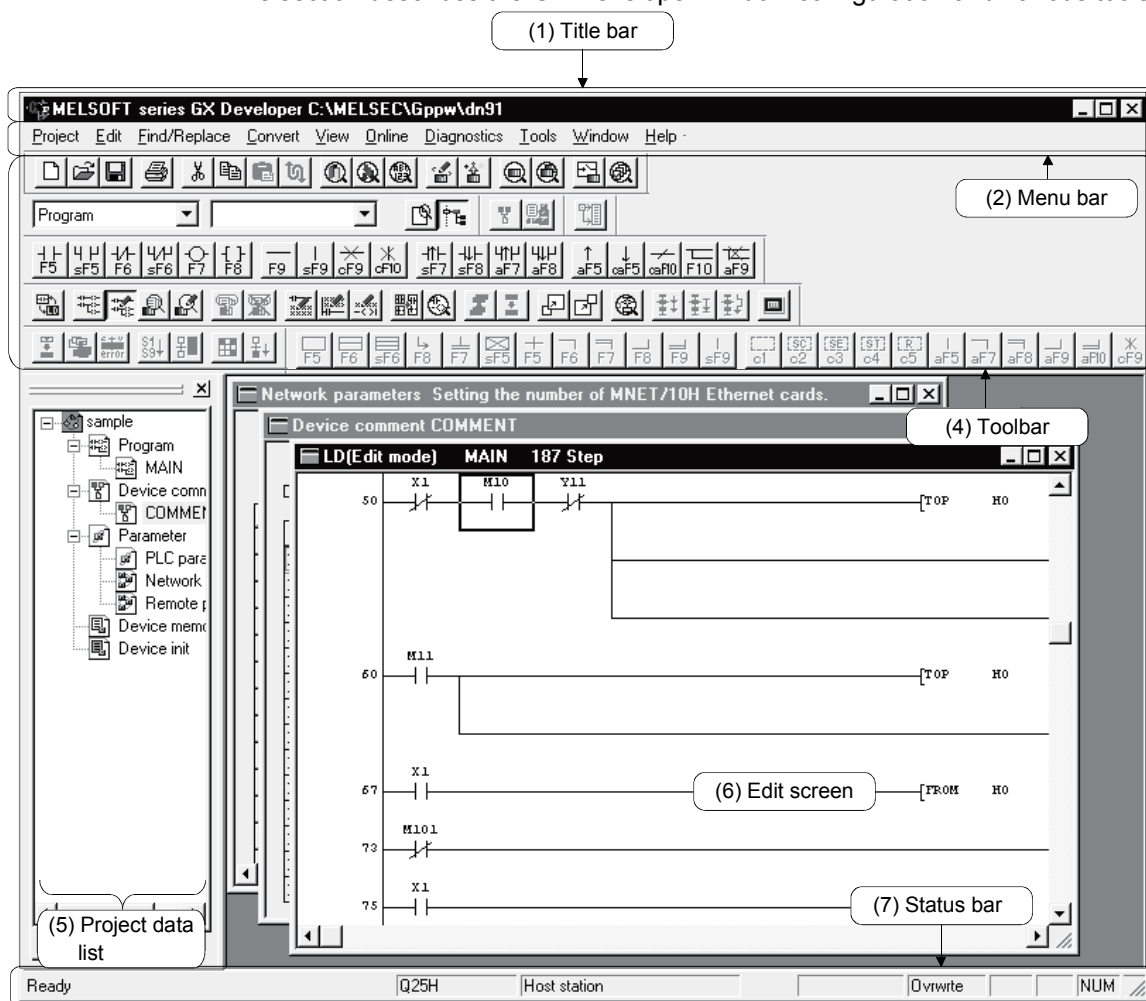
- 5) The left Windows confirmation dialog box appears. Select [Close]. This completes the update of driver software.

(Completion)

## 4. USING GX Developer

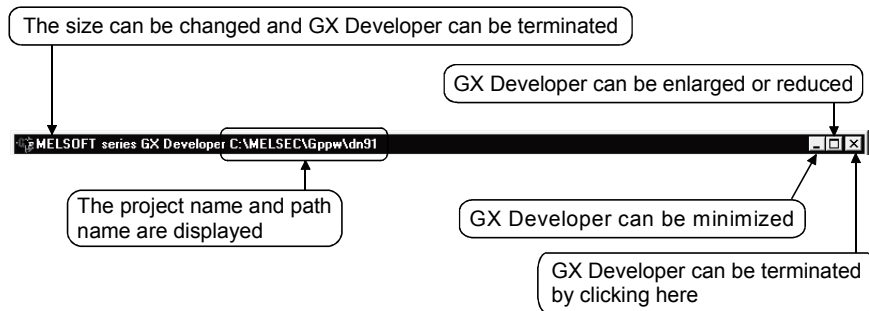
### 4.1 GX Developer Edit Window and Various Tools

This section describes the GX Developer window configuration and various tools.



## (1) Title bar

Indicates the name of the open project



To close multiple windows at once, select [Windows] → [Close all windows].

## (2) Menu bar

Displays the names of GX Developer menus.

If a desired menu is selected, the drop-down menu is displayed so that various functions can be used.

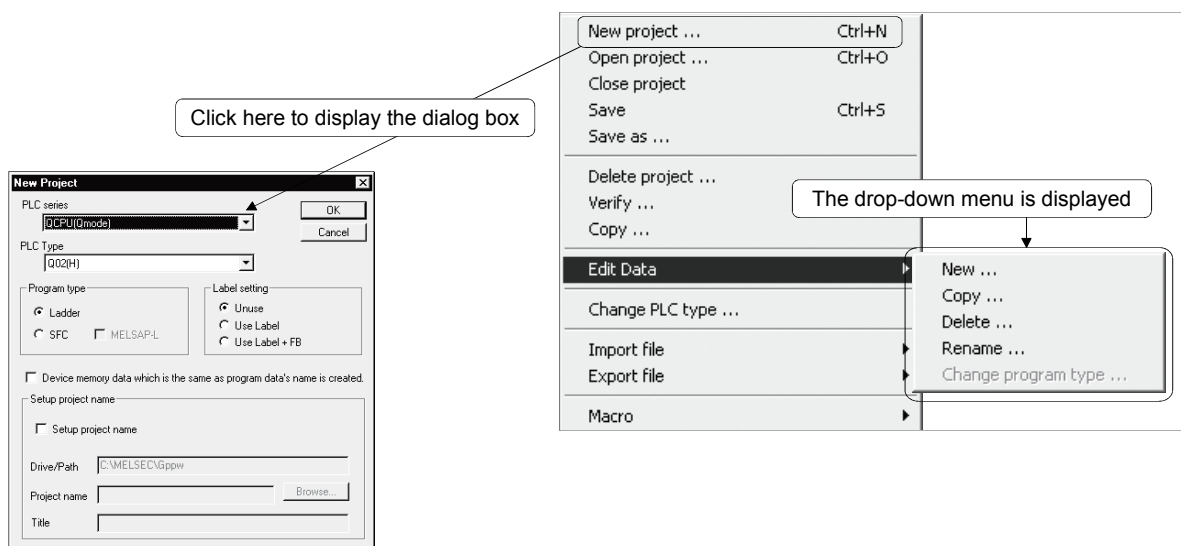


## (3) Drop-down menu

Displays the names of GX Developer functions.

When "►" is displayed at the rightmost end of the menu item, the drop-down menu of the selected item is displayed.

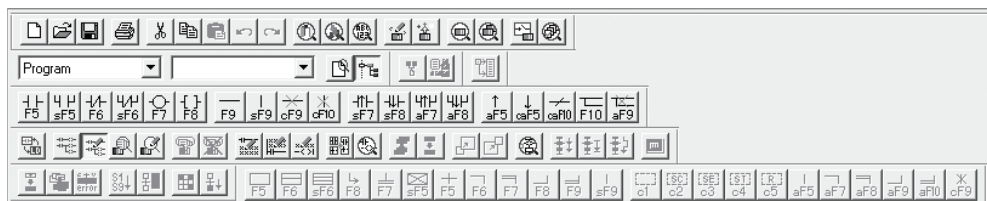
When "..." is displayed next to a function name, a setup dialog box is displayed by selecting the item.





## (4) Toolbar

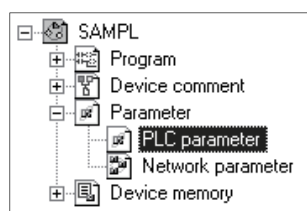
Displays the buttons for the frequently used functions assigned on the menu bar.



## (5) Project data list

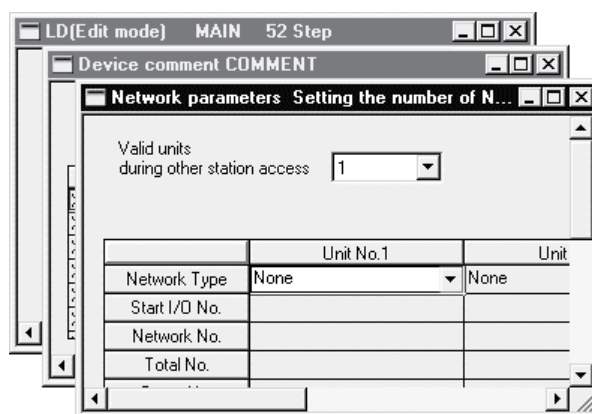
Lists project data by class.

The circuit creation dialog box and other dialog boxes can be directly called.



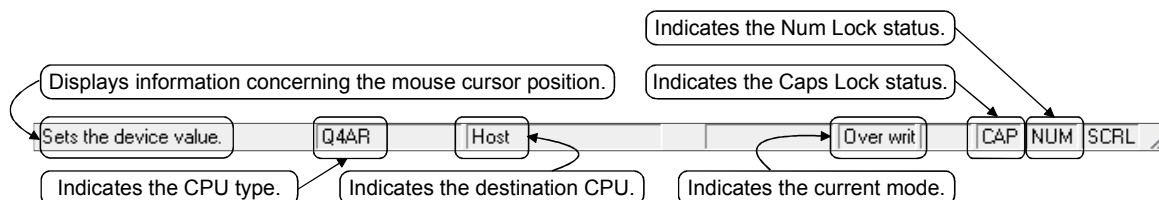
## (6) Edit window

Displays the circuit creation dialog box and comment creation dialog box to make settings for circuits, comments, and parameters.



## (7) Status bar

Displays the GX Developer status information.

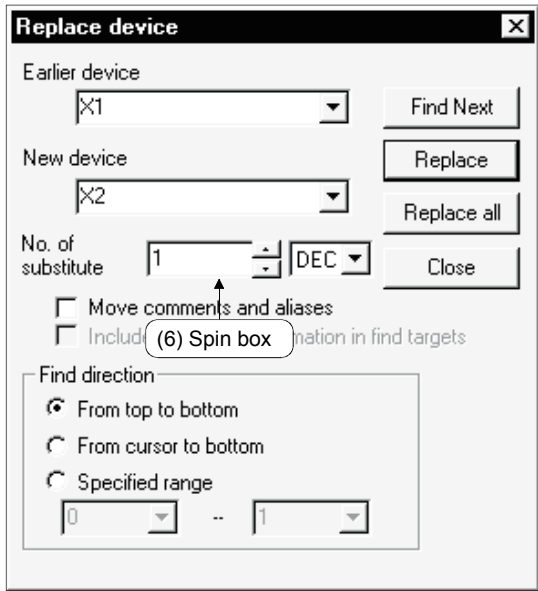
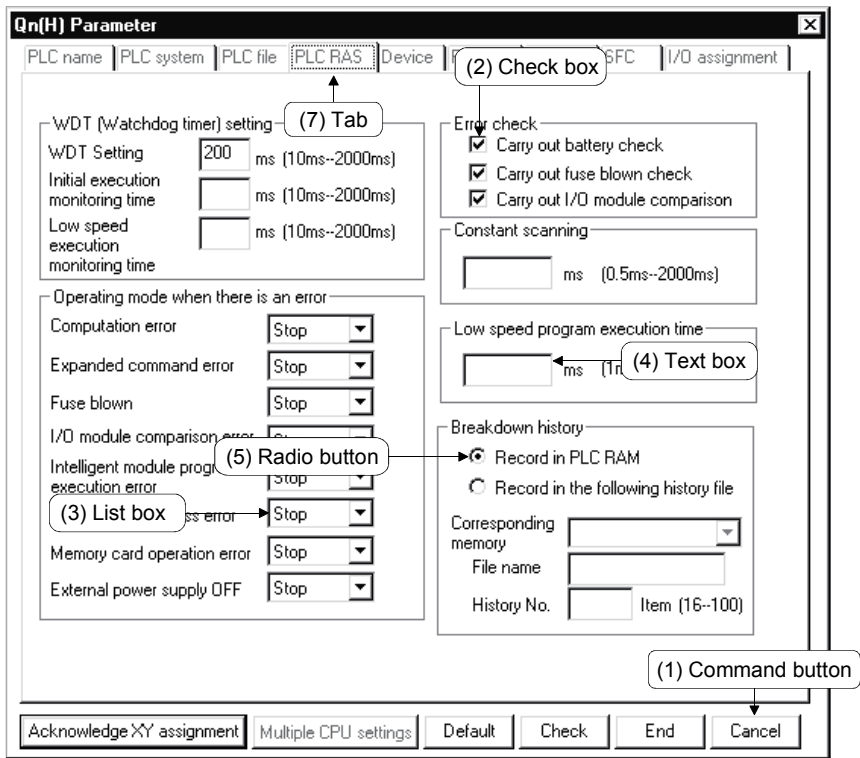


## (8) Displaying a handy menu

Work efficiency can be increased by clicking the right mouse button to display a menu of items related to the current work.

When you are editing a circuit or comment, you can select [Cut], [Copy], [Paste] or [Find Device] from this menu.

4.2 Dialog Box Basic Operations



(1) Command button

Buttons such as  and .

Click the button to execute the item.

(2) Check box

Click a checkbox to select and execute an item.

(3) List box

Click  to drop-down the list of the items, then click a desired item to select.

(4) Text box

Enter characters with the keyboard.

The text box may permit only numeric values or letters.

(5) Radio button

Click ☐ for the item to be selected.

(6) Spin box

Spin boxes may permit direct value input or selection of a value by clicking  .

When inputting a value directly, click    and enter a numeric value with the keyboard.

When clicking   for selecting a value, clicking  increments the value and clicking  decrements the value.

(7) Tab

For tab switching, click the desired tab in the property pages dialog box.

# MEMO

[illegible]

## APPENDICES

### APPENDIX 1 Questions and Answers about Personal Computers

---

This section provides basic information in question & answer style. Please see the following information as necessary.

- Q1. What happens when the monitor with a resolution of 800x600 pixels or lower is used?
- A1. The icon near the edges of the screen may not be displayed entirely, so that the operations cannot be performed using that icon.  
Read the manual and set the dedicated resolution high enough to display the entire icon.
- Q2. What is the operating environment?
- A2. It refers to a combination of hardware equipment needed to fully utilize GX Developer, GX Simulator, etc., and basic operating software (Refer to Section 2.2).
- Q3. Is the MELSOFT software package available under Microsoft® Windows® 3.1 operating system?
- A3. The MELSOFT software package is not available under Windows® 3.1.
- Q4. What happens when the CPU is Pentium® 133MHz or slower?
- A4. When the clock speed of the CPU is slower than 133MHz, it takes longer for operations such as screen display.

## APPENDIX 2 Notes on GX Developer

This section lists the questions and answers to assist you in solving the problems encountered during GX Developer operation.

Q1. Each circuit diagram is enclosed in white lines during circuit editing depending on the type of video card installed in the personal computer (card storing the characters, figures, and pictures to be displayed on the monitor as data). How can these white lines be deleted?

A1. Make necessary settings from the Windows® 95/ Windows® 98/ Windows® Me/ Windows NT® Workstation 4.0/ Windows® 2000 "Control Panel".

Operating procedure

(1) Open "Control Panel".



(2) Open "System".



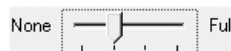
(3) Click the "Performance" tab.



(4) Click the "Graphics" button.



(5) Set "Hardware acceleration" to the entry (second entry) next to "None".



Q2. What action should be taken for the message "Can not allocate Share memory" or "Initialization failed" displayed at the start of the GX Developer software package?

A2. Restart the GX Developer software package or restart Windows® 95/ Windows® 98/ Windows® Me/ Windows NT® Workstation 4.0/ Windows® 2000 and start the GX Developer software package again.

Q3. Why does it take time to display the dialog box after starting setup.exe on Section 3.1.2?

A3. It takes time when the memory-resident program (such as Virus checker) is running.

Q4 What points are to be noted in installing Anti-virus Software (commercially available software package) on the personal computer.

A4 (a) At the start of Anti-virus Software  
Because it takes time for initialization at the start of Anti-virus Software, other applications in "StartUp" group may not be started.  
In addition, it may take time to accept the subsequent operations after storage into the task tray.  
These phenomena vary depending on the specifications of the operating environment (CPU, memory, etc.).  
It is well known that this problem occurs frequently when the CPU is Pentium® 100 MHz or lower.

(b) Effects on the system  
When Anti-virus Software is already started, system load increases because Anti-virus Software checks the files.  
For this reason, it may take extra time for starting the application depending on the operating environment.  
These phenomena vary depending on the operating environment specifications (CPU, memory, etc.).  
It is well known that this problem occurs frequently when the CPU is Pentium® 100 MHz or lower.

(c) Effects on applications  
When applications cannot be started or run normally after Anti-virus Software has been installed, check the operations of the applications according to the following procedure:  
1) Uninstall Anti-virus Software and restart the system to check the operations of the applications.  
If the same problem recurs, the cause of the problem is not Anti-virus Software.  
In such a case, contact our application support engineers.  
2) When the applications run normally after Anti-virus Software has been uninstalled, install Anti-virus Software again and change the monitor setting to "Custom Monitor." In addition, change the selection of the checkboxes for Extension Designation or Monitor Function.

\* When the system does not work well after the step 1) has been performed, install Windows® 95/ Windows® 98/ Windows NT® Workstation 4.0 and/or applications again.

- Q5. When a program is read from a floppy disk, it cannot be read from the floppy disk so long as the disk is write protected. Why not?
- A5. Because multiple GX Developer can be started, access to files in the same floppy disk may occur simultaneously. In such a case, an access flag is written to a floppy disk at the time of floppy disk access to prevent the files in the disk from being accessed from another GX Developer. Namely, no files can be read in this system so long as the floppy disk is write protected.



# MEMO

[illegible]

Microsoft, Windows, Windows NT, Windows Vista are registered trademarks of Microsoft Corporation in the United States and other countries.

Pentium is a registered trademark of Intel Corporation in the United States and other countries.

Other company and product names herein are either trademarks or registered trademarks of their respective owners.

SPREAD

Copyright (C) 1998 Farpont Technologies, Inc.



# ***GX Developer Version 8***

## **Operating Manual (Startup)**

MODEL	GXDEV8-O-IN-E
MODEL CODE	13JU40
SH(NA)-080372E-K(0904)MEE	



HEAD OFFICE : TOKYO BUILDING, 2-7-3 MARUNOUCHI, CHIYODA-KU, TOKYO 100-8310, JAPAN  
NAGOYA WORKS : 1-14 , YADA-MINAMI 5-CHOME , HIGASHI-KU, NAGOYA , JAPAN

When exported from Japan, this manual does not require application to the Ministry of Economy, Trade and Industry for service transaction permission.

Specifications subject to change without notice.